



CANadda



Lincolnshire Learning Disability Coalition



Newsletter

April 2013

Issue 44

Tel: 01522 716899

Web Site: www.canadda.org.uk

Email: debbie.canadda@yahoo.co.uk

Chairperson - Mrs Debbie Marshall



Happy Easter



Don't forget we have Geoff Evans coming to do a talk about Sensory Issues on Friday 19th July. The booking form is available but due to limited spaces places booking needs to be in advance.

I was hoping to see the warmer weather by now. It is too cold for me!

You may be pleased to hear I completed the Gainsborough & Morton 10K, I haven't learnt about my official finish time but I was pleased to finish the race in a good time. I am hoping to have raised over £200 so thank you to everyone that sponsored me!

A big thank you to those who filled in the ASD Consultation, it has been a success and I am looking forward to finding out the results and outcomes from the Consultation.

I hope you all have a wonderful Easter! Hopefully I will see you soon.



READING/SPELLING DIFFICULTIES? DYSLEXIA? Val will give an informal talk on 20th May which will be of interest to those of any age who are struggling to read and spell. In particular parents of children with such difficulties may find it helpful. Some techniques she has used in her work with dyslexic children and adults will be demonstrated. It would be helpful if you could remember to bring paper and pens, thank You!!!! Valerie Haslam Specialist Dyslexia Teacher.

World Autism Awareness Day 2 April 2013



Lincoln 10K Road Race—Sunday 7th April 2013

Both Amber Smethurst and Mick Sylvester are kindly going to be running the Lincoln 10k on behalf of CANadda to help raise funds for us.

Amber Smethurst is one of CANadda's members.



Mick Sylvester works for the police.



We are very grateful to both for their time and effort to support CANadda, thank you both very much!

CANadda

Monday 15 April 2013



Clare Parker—Carers Team Co-Ordinator. A talk around benefits of assessment and the services they can provide.

This is not counselling or any form of therapy.

Support Meeting Dates 2013

15th April (7pm) Clare Parker Co—Ordinator from the Carers Team.

20th May (7pm) Valerie Haslam Retired Specialist Dyslexia Teacher, a talk on Phonics.

17th June (TBC)

15th July—No Meeting.

19th July (9:45am) Geoff Evans, a talk about Sensory Issues.

August—No Meeting.

16th September (TBC)

October—No Meeting.

18th November (7pm) Year End Get-together.

December—No Meeting.

Methodist Church, Lincoln Rd, Washingborough, LN4 1AT.



Social Dates for your Diary

Saturday 1st June—Bowling @ 5pm.



Sunday 9 June - Summer Bazaar starts 2pm.

DISCLAIMER CANadda is an information service. If you discover any information which you believe to be inaccurate please contact debbie.canadda@yahoo.co.uk. CANadda have included various websites for your information only. We do not endorse or recommend any product or services and inclusion on our newsletter does not necessarily state or reflect the views of CANadda. CANadda cannot be held responsible for any damage or loss caused by any inaccuracy on our newsletter or on linked websites/pages. (Please note that some of our information is provided on a personal perspective completed by people that have a personal approach).

Autism Spectrum Disorder

Techniques used by a school to help autistic students:

<http://bit.ly/13mQTga>

Councils failing SEN children: <http://bit.ly/Y1qLT5>

Recognising autism spectrum disorder: <http://www.autism.org.uk/working-with/health/information-for-general-practitioners/recognising-autism-spectrum-disorder.aspx>

Dyslexia / Dyscalculia

Common Characteristics of Adult Dyslexia <http://www.ne-dyslexia.com/adultdyslexiacharacteristics.html>

Dyscalculia <http://en.wikipedia.org/wiki/Dyscalculia>

Dyspraxia / Dysgraphia

Further/Higher Education http://www.dyspraxiafoundation.org.uk/services/gu_higher.php

8 Signs Your Child Has Dysgraphia <http://voices.yahoo.com/8-signs-child-has-dysgraphia->

ADD/ADHD

ADHD can continue into adulthood, study finds <http://www.nhs.uk/news/2013/03March/Pages/ADHD-can-continue-into-adulthood-study-finds.aspx>

ADHD Oxfordshire support group criticises NHS <http://www.bbc.co.uk/news/uk-england-oxfordshire-21588227>

ADHD Checklist <http://www.addresources.org/?q=checklist>

Autism Exhibition and Competition 2013

The Hoffmann Foundation

Dear Recipient, we are running our competition again this year (2013) and we have a large London gallery at our disposal from October until Christmas 2013. This will allow maximum exposure of any work submitted and I am mailing you today so that you will have time to consider and prepare work by the closing date at 16.00 on Monday 23rd September 2013.

I look forward to seeing you and your work over the next few months, please do not hesitate to get in touch with me if you think I can help you with anything.

Ian Wilson
The Art Coordinator, The Hub, Hoffmann Foundation for Autism Day Services, 2 Park Avenue, Wood Green, N22 7EX
Tel.: 0208 8818 638 (Workshop and Studios), Mob.: 0771 934 5331

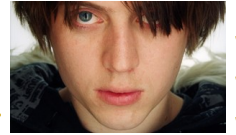
The Hub: 0203 326 6360 (Day Services), Mail to: art@hoffmannfoundation.org.uk

Famous Aspergers Syndrome Quote

"I think it's a mild case that I have," he said. "I remember when I was 15, I spoke to a couple of psychologists. But I don't think they diagnosed me with anything. So. Maybe it grew. Maybe it became more intense when I started in the band. But I'm not really sure."

Of the decision to continue the band as a largely studio-based project, he said: "I feel comfortable writing songs. It's a good outlet for me. Seeing as though I'm not that social, it's a way to communicate."

Craig Nicholls
Lead singer of a rock band and song writer.



FREE AUTISM EVENT FOR FAMILIES, CARERS AND EVERYBODY WITH AN INTEREST

WEDNESDAY 22 MAY 2013
NOVOTEL, NOTTINGHAM.
LEGAL—COMMUNICATION WORKSHOP
EDUCATION—INSPIRATIONAL SPEAKERS
FUNDING—A PARENTS VIEW
BEHAVIOURAL CHALLENGES—PARENT SUPPORT
TEL: 0800 0556789 OR W:
www.hesleygroup.co.uk/events/autism-event



When Illnesses Collide: Bipolar and ADHD

<http://blogs.psychcentral.com/bipolar-life/2013/03/when-illnesses-collide-bipolar-and-adhd/>

Research

Volunteers Needed for ADHD Study and Dyslexia in the Workplace Research
<http://www.bdadyslexia.org.uk/news/research.html>

Children & Young People's Conference 2013



Figures from the Mental Health Foundation show that 1 in 10 children between the age of 1 and 15 years old has a mental health condition. With this in mind this timely conference, to be held at **One Drummond Gate in Central London, on Wednesday 11th September**, will cover all the key issues concerning the health and wellbeing of children and young people across the UK.

Topics to be discussed include:

- Mental health and young people
 - Understanding and responding to the mental health needs of children in looked after care
- Improving the physical, emotional and psychological foundations built during the first few years of a child's life

To register, please [book online](#) or call **0845 647 7000**.

Please quote source reference **GH0313** if registering any conference places online to receive the discounted rate.